



# The Brazilian Journal of INFECTIOUS DISEASES

[www.elsevier.com/locate/bjid](http://www.elsevier.com/locate/bjid)



## Original Article

# SARS-CoV-2 Incidence, signs and symptoms and main risk factors for COVID-19 infection in Health Care Workers: A hospital-wide survey in Salvador, Brazil



Iris Montaña-Castellón <sup>a,b,\*</sup>, Liliane Lins-Kusterer <sup>a,b</sup>, Estela Luz <sup>a,b</sup>,  
Celia Pedrosa <sup>a,b</sup>, Márcia Paz <sup>b</sup>, Carlos Brites <sup>a,b</sup>

<sup>a</sup> Universidade Federal da Bahia, Programa de Pós-graduação em Medicina e Saúde (PPgMS), Salvador, BA, Brasil

<sup>b</sup> Universidade Federal da Bahia, Hospital Universitário Prof. Edgard Santos (HUPES), Laboratório de Pesquisa em Infecçologia (LAPI), Salvador, BA, Brasil

## ARTICLE INFO

### Article history:

Received 5 February 2022

Accepted 3 July 2022

Available online 21 July 2022

### Keywords:

Covid-19

Occupational health

Social inequalities

Workplace

Infection

## ABSTRACT

**Background:** Brazil is the third country most affected by Coronavirus Disease 2019 (COVID-19) in the world. Health care workers (HCWs) are at higher risk of infection. Despite the increasing numbers of studies on the topic, There are gaps in the knowledge of characteristics and risk factors for infection of HCWS. This information is important to design preventive strategies and to mitigate the disease impact. The objective of this study was to estimate the incidence of severe acute respiratory syndrome coronavirus 2 (SARS-CoV-2) infection, to identify factors associated, and to describe symptoms reported by healthcare workers at a tertiary hospital in Salvador, Brazil.

**Methods:** All HCWs were evaluated in a cross-sectional study conducted between May and September 2020, using self-administered questionnaires, and screening all participants for SARS-COV-2 IgG and IgM antibodies by rapid tests. Reactive IgG samples were retested by ELISA and IgM-positive test had a saliva sample retest by RT-PCR. Univariate associations were estimated by a non-adjusted incidence proportion ratio. Variables associated with COVID-19 incidence at  $p < 0.20$  were selected for inclusion in a binary logistic regression model.

**Results:** A total of 2083 HCWs were included, mean age  $41 \pm 10$  years, 71.8% women, and 77.8% non-white. Of these, 271 (13.0%) and 25 (1.2%) HCWs tested positive for IgG and IgM SARS-CoV-2 antibodies, respectively, and three had a positive RT-PCR. Ancillary work [Odds Ratio (OR): 4.96], elementary education (OR: 2.91), high school education (OR: 2.89), and catholic religion (OR: 2.16) were associated with an increased likelihood of a positive IgG antibodies against SARS-CoV-2. Anosmia [Incidence Proportion Ratio (IPR): 7.41] and ageusia (IPR:8.51) were the most frequent associated symptoms.

**Conclusion:** HCWs with low mean family income, lower level of schooling, ancillary work being black had a significantly higher likelihood of testing positive for SARS-CoV-2 antibodies. Social vulnerability was an important risk factor for COVID-19 infection.

\* Corresponding author.

E-mail address: [iris.med.umss@gmail.com](mailto:iris.med.umss@gmail.com) (I. Montaña-Castellón).

<https://doi.org/10.1016/j.bjid.2022.102387>

1413-8670/© 2022 Sociedade Brasileira de Infectologia. Published by Elsevier España, S.L.U. This is an open access article under the CC BY-NC-ND license (<http://creativecommons.org/licenses/by-nc-nd/4.0/>)

## Introduction

Coronavirus Disease 2019 (COVID-19) is caused by severe acute respiratory syndrome coronavirus 2 (SARS-CoV-2), a new beta-coronavirus that shares 88% of sequence identity from SARS-CoV, the virus that caused an important outbreak in 2002-2003.<sup>1-2</sup> COVID-19 is spread worldwide, and Brazil was the country with the third highest number of accumulated cases in the world by the time this study was conducted, according to the Brazilian Ministry of Health's official report.<sup>3</sup>

SARS-CoV-2 is transmitted mainly through inhalation or contact with infected droplets. Health care workers (HCWs) have been one of the groups most affected by the pandemic,<sup>4,5</sup> due to their position on the front-line, especially those who work in intensive care units where contact with infected SARS-CoV-2 patients is more direct and frequent.<sup>6</sup> A similar situation was observed in the 2002 SARS outbreak when 21% of infected patients were HCWs.<sup>7</sup> By September 2020, a total of 1405 Brazilian HCWs had been infected by SARS-CoV-2 and 315 died due to COVID-19. The most frequently infected HCWs were nurse technicians (109,955; 34.1%), nurses (47,339; 14.7%), doctors (33,032; 10.3%), community health workers (16,546; 5.1%), and health units receptionists (14,024; 4.4%).<sup>8</sup> In addition, the population of HCWs also involves general service personnel involved in cleaning, transportation, and food preparation, which are essential workers for the maintenance of hospitals' functioning but generally are not included in the statistics on infected HCWs.<sup>9</sup>

The high exposure to SARS-CoV-2, and the increased stress levels that characterize the work in pandemic situations have been well-described.<sup>5,10,11</sup> Many COVID-19 studies focused on HCWs' mental health<sup>11-12</sup> but we still have gaps in the knowledge of specific characteristics of HCWs and the main risk factors related to COVID-19 infection in this occupational group. Identifying the risk factors for COVID-19 acquisition in hospital settings is an important step to design preventive strategies and to mitigate the impact of COVID-19 on HCWs.<sup>13</sup> We aimed to estimate the incidence of SARS-CoV-2 infection, to identify factors associated, and to describe symptoms reported by healthcare workers at a tertiary hospital in Salvador, Brazil.

## Methods

### Study design and participants

From May to September 2020, during the first months of the pandemic, a cross-sectional study of HCWs at a university hospital was conducted. All HCWs over 18 years of age were invited to participate. Participants were actively working at the hospital, asymptomatic at the moment of inclusion. To rule out any possibility of early stage of infection,

asymptomatic/oligosymptomatic by COVID-19 infection, we used a questionnaire to assess the presence of any symptom potentially associated with a viral infection. The interview and blood sample collection were performed at the same day. We used rapid tests for detection of IgG and IgM antibodies against SARS-CoV-2. If a HCW tested positive for IgM antibodies, a RT-PCR test was performed to confirm acute infection, and for implementing quarantine. The institutional review board approved this study under CAAE 31748320.3.1001.5543 N° 4.042.620. All participants signed an informed consent form before enrolling for voluntary participation.

### Study location

This University Hospital, located in the city of Salvador, Brazil, is a large public hospital and outpatient teaching unit. During the pandemic, the hospital established a specific ward and an ICU unit for suspected/confirmed cases of SARS-CoV-2, as a measure to protect patients with multiple comorbidities, immunosuppressed, and bone marrow transplant patients treated at the reference complex. A surveillance program was implemented according to current guidelines to diagnosis and treatment of HCWs.<sup>14</sup> Serological screening was conducted in all HCWs and SARS-CoV-2 RT-PCR tests were performed in suspected cases, to allow early isolation and treatment. Suspected cases were tested in the same day (by RT-PCR), and results promptly sent to the respective unit, making possible a rapid diagnosis and implementation of preventive measures. Personal protective equipment, social distance and enforced hands hygiene policies were also implemented at the hospital.

### Data collection and variables

Data collection was carried out using self-administered structured questionnaires, minutes before performing the rapid test for SARS-CoV-2. Independent variables included sex, age, race (white, racially-mixed, black, and other, according to the Brazilian official report on demographics), educational level, family income (Brazilian minimum wage is approximately 217.18 US dollars/month), HCWs' function, religion, and signs and symptoms usually associated with the infection like fever, cough, ageusia, anosmia, and others. The main outcome variable was the incidence of COVID-19 from May to September 2020.

### Diagnostic tests

After completing the standardized questionnaire, a blood sample was collected, and plasma was used to perform the rapid and ELISA tests. We used the COVID-19 IgM/IgG Combo ECO Teste – TR. 008 (ECO Diagnóstica LTDA, Nova Lima, MG, Brazil), based on the lateral flow platform for diagnosing SARS-CoV-2 infection. If the rapid test result was positive for IgG

antibodies, the same sample was retested by the Euroimmun ELISA Anti-SARS-CoV-2 IgG (Euroimmun AG - Seekamp, 31 - Luebeck - Germany) methodology, specificity of 96.1% (IC: 90.1–98.8) and sensitivity of 89.5% (75.3–96.4).<sup>15</sup> All positive samples, in both diagnostic tests (IgG rapid test and ELISA), were considered positive for SARS-CoV-2 infection. HCW presenting IgM reactive samples were asked to provide saliva samples for SARS-CoV-2 RT-PCR (*Charité-Berlin protocol*).<sup>16-17</sup> HCW testing positive for SARS-CoV-2 IgM antibodies were dismissed from hospital duties and kept isolated until RT-PCR results were available.

### Health care workers (HCWs)

HCWs functions were classified into eight groups: medical doctors, nurses, diagnostic support (laboratory, pharmacy, and bioimage workers), multiprofessional team (psychologist, dentists, speech therapists, social service, physical therapists, occupational therapists, nutritionists), ancillary nurses, administrative (directory, lawyers, administrative, secretaries, archivists), ancillary workers (cooks, cleaning staff, maintenance, porters, security, laundry, drivers) and medical students (interns). During the pandemic period, all students were asked to stay at home from March through September 2020, when last-year medical students resumed their hospital activities. All students were tested before resuming their activities in the hospital, and this group was included in this study for comparative purposes.

### Statistical analysis

Study sample size was not calculated since this study was a hospital census. The data were analyzed with the SPSS 18.0 statistical package and OpenEpi. Participants with  $\geq 20\%$  missing data were excluded from analysis. Nominal and continuous variables were described in frequency distributions and measures of central tendency, respectively. The main outcome variable was a positive test for COVID-19. Univariate associations were estimated by the incidence proportion ratio (IPR). The first SARS-CoV-2 case in Salvador, Bahia, was diagnosed in March 2020. The study population was 2083 individuals until September 2020. Therefore, all new cases were measured as IPR.<sup>18</sup> Variables associated with COVID-19 incidence at  $p < 0.20$  were included in a binary logistic regression model, and Odds Ratios (OR) were calculated with 95% Confidence Intervals (CI). The analysis was completed based on 1887 observations. Variables with  $p$ -values less than 0.05 remained in the final model. The omnibus test evaluated the adequacy of the model, and the Hosmer & Lemeshow test indicated the model goodness-of-fit to the data.<sup>19</sup>

## Results

The University Hospital has around 2,650 HCWs; 2090 were interviewed, but only 2,083 completed sociodemographic and symptom questionnaires and were included in the study. Fig. 1 summarizes the study procedures. Overall, 71.8% were women, 77.8% were self-identified as non-white,

and the mean age was  $41 \pm 10$  years. Regarding the current function, 65% were front-line health care workers (doctor, nurse, multiprofessional, nursing technician), 13.3% ancillary workers, 10.8% administrative, 6.3% of students, and 4.6% worked with diagnostic support. Most participants (72.0%) had a higher education level (graduate or postgraduate), and 153 (7.5 %) declared no religion. A total of 271 (13.0%) and 25 (1.2%) HCWs tested positive for IgG and IgM SARS-CoV-2 antibodies, respectively, and three HCWs had a detectable SARS-CoV-2 RT-PCR test, all of them had also IgG positive antibodies.

The SARS-CoV-2 incidence was 13.0% (271/2083) in the five-month period. The IPR for SARS-CoV-2 was higher among those presenting lower socioeconomic level (Table 1). In addition, there were differences in SARS-CoV-2 incidence according to religion, with a higher incidence among Catholics and Protestants than in those who professed no religion. Table 1 depicts the difference in incidence of SARS-CoV-2 infection according to main characteristics of HCWs. There was an inverse association between the socioeconomic level, and SARS-CoV-2 incidence.

The logistic regression model ( $X^2(8) = 4.612, p > 0.798$ ), showed a good fit for the data, which explained 16.0%. Nagelkerke  $R^2$  of the variance in COVID-19 correctly classified 88.0% of cases.<sup>19</sup> The regression analysis, completed based on 1,887 observations, was performed to ascertain the association between HCWs functional group, education, race, family income, and religion and COVID-19 incidence.

Ancillary workers were almost 5-fold more likely to have COVID-19 than medical students (OR: 4.96, 95% CI: 1.95–12.63). Lower level, elementary education (OR: 2.91, CI 95: 1.19–7.13), and high level of schooling (OR: 2.89 95% CI: 1.61–5.18), remained independently associated with an increased likelihood of presenting a COVID-19 positive test. In addition, Catholics (OR: 2.16, 95% CI: 1.01–4.62) were 2-fold more likely to have a positive COVID-19 test than those without religion (Table 2).

Table 3 displays the main clinical characteristics reported by the study participants. Ageusia (OR: 7.41 95% CI: 6.15–8.94) and anosmia (OR: 8.51 95% CI: 7.09–10.22) were the most frequent symptoms associated with COVID-19 incidence.

## Discussion

This study describes the main characteristics of 2,083 HCWs at a tertiary hospital in Salvador-Brazil, who were tested for SARS-CoV-2 antibodies. A total of 271 (13.0%) HCWs tested positive for SARS-CoV-2 antibodies, and the sociodemographic markers of social vulnerability were predictive of a higher likelihood of infection by SARS-CoV-2. In addition, Catholic religion, and clinical findings of anosmia, and/or ageusia were strongly associated to SARS-CoV-2 infection.

Socially vulnerable HCWs showed the highest COVID-19 incidence, reflecting similar pattern observed among non-HCW population.<sup>20,21</sup> We infer that factors like low income, informal work status, low level of education, and black or mixed race, are markers of social vulnerability and are indirect markers of use of mass public transportation, poor access

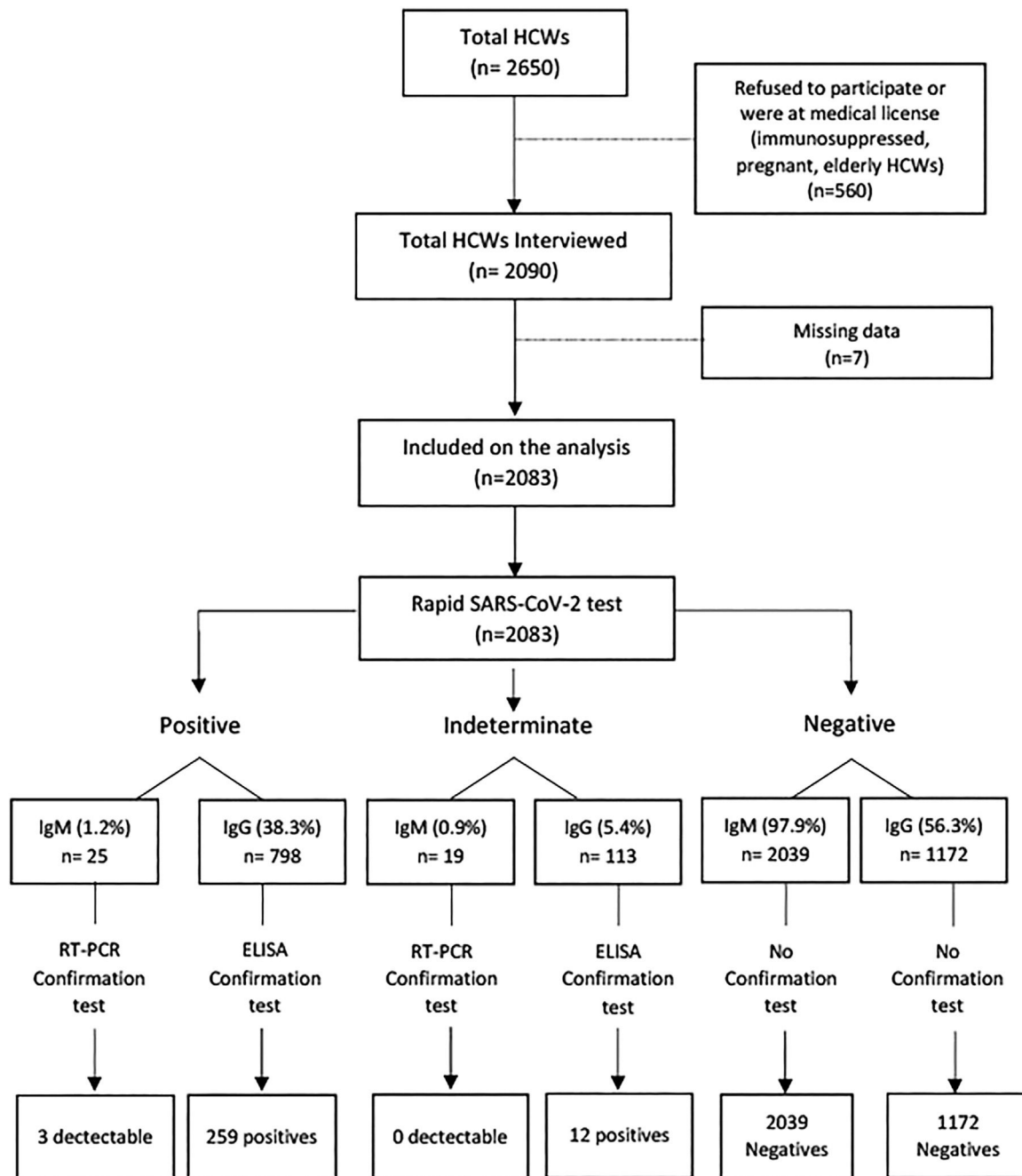


Fig. 1 – Health care workers SARS-CoV-2 incidence study, flow diagram.

to basic services and probably inadequate use of personal protection equipment. We also found that having no religion was associated with lower risk of COVID-19 infection. Some religious practices can contribute to the spread of COVID-19 due to extended transmission during communal religious prayers and large attendance at religious gatherings and festivals.<sup>22,23</sup> This association was poorly studied, especially during lockdown periods, in a retrospective study people declaring no religion had the lowest risk of COVID-19 related death, before and after lockdowns.<sup>23</sup>

The detected associations between social vulnerability and a higher risk of COVID-19 demonstrate that the risk of

infection by SARS-CoV-2 is not only determined by the exposure. Non-white race, lower educational level and lower family income are strongly associated with a higher risk of infection, in a HCW population. In this study, it clearly indicates that the risk of COVID-19 in a hospital is not a direct consequence of a higher exposure to infected patients but is strongly influenced by the HCWs educational level, and social position. Probably these characteristics are a proxy of lower adherence to preventive actions, like masks use, social distancing and hands hygiene.<sup>24</sup>

Social disparities were previously described in a Brazilian population-based study, showing that black and mixed

**Table 1 – Incidence of SARS-CoV-2 infection according to sociodemographic characteristics among health care workers, Salvador-Bahia.**

	Total		SARS-CoV-2 IgG ELISA		IPR (95% CI)			P-value
	n = 2083	(100)	Positive		Negative			
			n = 271	(13.0)	n = 1812	(87.0)		
<b>Age years</b>								
Mean (SD)	41	(±10)	42	(±10)	40	(±10)	—	0.025 <sup>a</sup>
<b>Sex, n (%)</b>								
Female	1495	(71.8)	196	(13.1)	1299	(86.9)	1.02 (0.80–1.32)	0.834
Male	588	(28.2)	75	(12.8)	513	(87.2)	1	
<b>Race, n (%)</b>								
Black	507	(25.1)	100	(19.7)	407	(80.3)	2.85 (1.94–4.17)	<0.001
Racially Mixed	1037	(51.3)	130	(12.5)	907	(87.5)	1.81 (1.24–2.63)	<0.001
White	448	(22.2)	31	(6.9)	417	(93.1)	1	
Other	30	(1.5)	3	(10.0)	27	(90.0)	1.44 (0.47–4.46)	0.516
<b>Education, n (%)</b>								
Elementary	60	(2.9)	24	(40.0)	36	(60.0)	6.05 (4.07–9.00)	<0.001
High School	301	(14.5)	99	(32.9)	202	(67.1)	4.97 (3.70–6.70)	<0.001
Technician	219	(10.6)	28	(12.8)	191	(87.2)	1.93 (1.26–2.96)	0.002
Graduate	611	(29.5)	59	(9.7)	552	(90.3)	1.53 (1.08–2.17)	0.014
Postgraduate	878	(42.4)	58	(6.6)	820	(93.4)	1	
<b>Health Care Workers, n (%)</b>								
Physician	412	(19.8)	23	(5.6)	389	(94.4)	1.05 (0.46–2.40)	0.902
Nurse	255	(12.3)	19	(7.5)	236	(92.5)	1.40 (4.61–3.26)	0.423
Diagnostic Support	95	(4.6)	7	(7.4)	88	(92.6)	1.39 (0.50–3.83)	0.523
Multiprofessional <sup>b</sup>	162	(7.8)	15	(9.3)	147	(90.7)	1.75 (0.73–4.16)	0.200
Nursing technician	522	(25.1)	61	(11.7)	461	(88.3)	2.20 (1.03–4.70)	0.031
Administrative	225	(10.8)	27	(12.0)	198	(88.0)	2.26 (1.01–5.05)	0.037
Ancillary workers <sup>c</sup>	277	(13.3)	112	(40.4)	165	(59.6)	7.62 (3.65–15.90)	<0.001
Student	132	(6.3)	7	(5.3)	125	(94.7)	1	
<b>Family Income, n (%)</b>								
<3 minimum wages	348	(17.6)	97	(27.9)	251	(72.1)	3.88 (2.96–5.09)	<0.001
3-5 minimum wages	532	(26.9)	66	(12.4)	466	(87.6)	1.72 (1.27–2.35)	<0.001
>5 minimum wages	1099	(55.5)	79	(7.2)	1020	(92.8)	1	
<b>Religion, n (%)</b>								
Catholic	1047	(51.4)	143	(13.7)	904	(86.3)	2.32 (1.21–4.46)	0.006
Protestant	838	(41.1)	107	(12.8)	731	(87.2)	2.17 (1.12–4.19)	0.014
Without Religion	153	(7.5)	9	(5.9)	144	(94.1)	1	

\* Column percentage; \*\*Line percentage.

<sup>a</sup> T-test.

<sup>b</sup> Multiprofessional HCWs included: physiotherapists, psychologists, dentists, phonoaudiologists, pharmacists, social assistants, occupational therapists.

<sup>c</sup> Ancillary HCWs included: cooks, cleaning staff, maintenance, porters, security, laundry, drivers.

Abbreviation: IPR (Incidence Proportion Ratio); HCWs (Health Care Workers)

individuals had infection rates 81% and 45% higher than whites, with a higher percentage of deaths occurring in primary-care or isolated emergency-care units and predominantly in public institutions, as a reflex of barriers to healthcare access. A positive gradient was found for all indicators of socioeconomic status and increases in disparities (denoted by less education, more household crowding, lower income, and higher concentration of subnormal areas) were associated with higher mortality rates.<sup>25</sup> The same pattern seems to be repeated in other countries with different sociodemographic, cultural and health system characteristics, like the United States and the United Kingdom.<sup>25–26</sup> Indirectly, the higher rates of infection in vulnerable populations, contributes to increase on contagion, saturation of public health systems or difficulty of access to private health systems and consequently higher mortality.

When the contemporary Brazilian epidemiological report<sup>13</sup> is compared to the dates in which our study was carried out,

we observe similar proportions of infected nursing technicians, nurses, and doctors, with nursing technicians being the most affected group. This indicates that regardless of the type of service, whether this hospital is a referral for COVID-19 or not, professionals with a lower degree of education could be at higher risk not only due to the greater exposure, but also due to educational factors and socioeconomic limitations. In addition, it was not possible to determine if the contagion occurred during the intra-hospital service or in the community. The low frequency of HCWs with a detectable RT-PCR was expected, as all interviewed participants were on duty within the hospital and were asymptomatic at the moment of testing.

The initial reports described fever and cough as the most frequent symptoms related to COVID-19.<sup>27,28,29</sup> However, following the increasing number of reports on the clinical characteristics of the disease, ageusia and anosmia became common symptoms, and highly suggestive of COVID-19.<sup>19</sup> In

**Table 2 – Binary logistic regression with SARS-COV-2 as the outcome among 1,887 health care workers, Salvador - Bahia.**

Variables (Reference)	OR	95% IC	P-Value
<b>Health Care Workers (Student)</b>	1	–	–
Physician	1.30	(0.53 – 3.17)	0.563
Diagnostic Support	1.38	(0.46 – 4.15)	0.565
Nurse	1.79	(0.69 – 4.61)	0.229
Multiprofessional	2.13	(0.81 – 5.57)	0.125
Nursing technician	1.73	(0.74 – 4.02)	0.205
Administrative	2.07	(0.86 – 5.03)	0.106
Ancillary workers	4.96-	(1.95 – 12.63)	0.001
<b>Education (Postgraduate)</b>	1	–	–
Graduate	1.52	(0.99 – 2.35)	0.057
Technician	1.72	(0.94 – 3.14)	0.077
High School	2.89	(1.61 – 5.18)	0.001
Elementary	2.91	(1.19 – 7.13)	0.019
<b>Religion (Without Religion)</b>	1	–	–
Protestant	1.66	(0.77 – 3.57)	0.199
Catholic	2.16	(1.01 – 4.62)	0.046

Abbreviations: OR (Odds Ratio); CI (Confidence Interval).

the current study, anosmia and ageusia were the most frequent symptoms presented by infected HCWs, and their presences were significantly associated with COVID-19 incidence. Usually such symptoms are not accompanied by nasal obstruction or rhinitis symptoms; this probably occurs due to direct damage caused by the virus on the olfactory and gustatory receptors<sup>30</sup> or due to altered mucosal immune response in the upper airways.<sup>31</sup> Table 3 shows that COVID-19 related symptoms, ageusia and anosmia, were strongly associated with COVID-19 positivity.

Our study has some limitations: the cross-sectional design does not allow to determine causality. However, we investigated all active HCWs of a tertiary hospital, which makes the detected associations consistent for the target population and minimizes selection bias. Given the circumstances and the study design, we were unable to adjust for factors such as community and occupational exposures, including the frequency of direct contact with COVID-19 patients or compliance to PPE (personal protective equipment) use. Even with the use of two tests to determine the serological status, there is a likelihood of false positive and false negative results.

**Table 3 – Incidence (%) of SARS-CoV-2 infection according to signs and symptoms of Covid-19 among health care workers, Salvador-Bahia.**

Sign/Symptom	SARS-COV-2 IgG ELISA						IPR (95% CI)	P-value	
	Total		Positive		Negative				
	n = 2083	(100) *	n = 271	(13.0) **	n = 1812	(87.0) **			
At least one sign or symptom	1434	(68.8)	225	(15.7)	1209	(84.3)	2.21	(1.63 – 3.00)	<0.001
Abdominal pain	316	(15.2)	47	(14.9)	269	(85.1)	1.17	(0.88 – 1.57)	0.286
Ageusia	178	(8.6)	111	(62.4)	67	(37.6)	7.41	(6.15 – 8.94)	<0.001
Anosmia	173	(8.3)	118	(68.2)	55	(31.8)	8.51	(7.09 – 10.22)	<0.001
Arthralgia	336	(16.1)	75	(22.3)	261	(77.7)	1.99	(1.56 – 2.52)	<0.001
Ataxia	80	(3.8)	23	(28.8)	57	(71.3)	2.32	(1.61 – 3.34)	<0.001
Cough	488	(23.4)	100	(20.5)	388	(79.5)	1.91	(1.52 – 2.39)	<0.001
Diarrhea	446	(21.4)	66	(14.8)	380	(85.2)	1.18	(0.91 – 1.52)	0.205
Dizziness	243	(11.7)	49	(20.2)	194	(79.8)	1.67	(1.26 – 2.21)	<0.001
Dyspnea	162	(7.8)	43	(26.5)	119	(73.5)	2.23	(1.68 – 2.97)	<0.001
Expectoration	154	(7.4)	39	(25.3)	115	(74.7)	2.11	(1.57 – 2.83)	<0.001
Fatigue	506	(24.3)	102	(20.2)	404	(79.8)	1.88	(1.50 – 2.35)	<0.001
Fever	237	(11.4)	75	(31.6)	162	(68.4)	2.98	(2.37 – 3.75)	<0.001
Headache	1047	(50.3)	162	(15.5)	885	(84.5)	1.47	(1.17 – 1.84)	<0.001
Hypoacusis	41	(2.0)	9	(22.0)	32	(78.0)	1.08	(0.65 – 1.77)	0.085
Hyporexia	243	(11.7)	87	(35.8)	156	(64.2)	3.58	(2.88 – 4.45)	<0.001
Mental confusion	30	(1.4)	11	(36.7)	19	(63.3)	2.89	(1.78 – 4.69)	<0.001
Myalgia	498	(23.9)	106	(21.3)	392	(78.7)	2.05	(1.64 – 2.55)	<0.001
Nausea	345	(16.6)	67	(19.4)	278	(80.6)	1.65	(1.28 – 2.12)	<0.001
Odynophagia	596	(28.6)	74	(12.4)	522	(87.6)	1.08	(0.65 – 1.77)	0.763
Palpitations	231	(11.1)	38	(16.5)	193	(83.5)	1.30	(0.95 – 1.79)	0.099
Paresis	80	(3.8)	24	(30.0)	56	(70.0)	2.43	(1.70 – 3.46)	<0.001
Paresthesia	150	(7.2)	29	(19.3)	121	(80.7)	1.54	(1.09 – 2.18)	0.016
Skin disorder	87	(4.2)	11	(12.6)	76	(87.4)	0.97	(0.55 – 1.70)	0.917
Skin rash	39	(1.9)	3	(7.7)	36	(92.3)	0.58	(0.19 – 1.75)	0.319
Sneezing	788	(37.8)	121	(15.4)	667	(84.6)	1.32	(1.06 – 1.66)	0.013
Thoracic pain	182	(8.7)	44	(24.2)	138	(75.8)	2.02	(1.52 – 2.69)	<0.001
Tinnitus	98	(4.7)	19	(19.4)	79	(80.6)	1.52	(1.00 – 2.32)	0.054
Urinary incontinence	42	(2.0)	13	(31.0)	29	(69.0)	2.44	(1.53 – 3.90)	<0.001
Urinary retention	6	(0.3)	3	(50.0)	3	(50.0)	3.87	(1.72 – 8.69)	0.006
Urinary urgency	59	(2.8)	8	(13.6)	51	(86.4)	1.04	(0.54 – 2.00)	0.848
Visual disturbance	50	(2.4)	7	(14.0)	43	(86.0)	1.08	(0.53 – 2.16)	0.833
Vomiting	78	(3.7)	15	(19.2)	63	(80.8)	1.50	(0.94 – 2.40)	0.096

\* Column percentage;

\*\* Line percentage. Abbreviations: IPR (Incidence Proportion Ratio); HCWs (Health Care Workers)

Some patients also are not able to develop a detectable production of antibodies against SARS-CoV-2, as we were not able to predict the exact number of cases on immunological window, which could also indicate a lower than actual seroprevalence rate. However, the testing approach we used (two screening tests, ELISA and PCR when necessary) was robust enough to provide a safe estimate of seroprevalence rate.

The findings from this large sample reinforce the need of a better understanding of the factors associated with an increased risk of COVID-19 in the HCW population. In conclusion, we observed that among HCWs at a tertiary hospital, markers of social vulnerability like: low mean family income, lower level of schooling, ancillary work, or being black had a significantly higher likelihood of testing positive for SARS-CoV-2 antibodies, those HCWs characteristics seems to be a more important risk factor for COVID-19 than the occupational exposure to infected patients. This knowledge can provide important insights for development and implementation of preventive strategies aiming at minimizing the risk of infection by SARS-CoV-2 in similar institutions, especially in a continental-wide country, like Brazil.

## Funding

“This study was financed in part by the Coordenação de Aperfeiçoamento de Pessoal de Nível Superior – Brasil (CAPES) – Finance Code 001”. The funder had no role in study design, data collection, data analysis, data interpretation, or writing of the report. The last author is a CNPq researcher (process number: 311095/2020-8).

## Conflicts of interest

The authors declare no conflicts of interest.

## REFERENCES

- Lu R, Zhao X, Li J, et al. Genomic characterisation and epidemiology of 2019 novel coronavirus: implications for virus origins and receptor binding. *Lancet*. 2020;395:565–74.
- Gao Z, Xu Y, Sun C, et al. A systematic review of asymptomatic infections with COVID-19. *J Microbiol Immunol Infect*. 2021;54:12–6.
- Ministério da Saúde. Boletim epidemiológico especial: doença pelo Coronavírus COVID-19, N 45. Secretaria de Vigilância Em Saúde.
- Arafa A, Mohammed Z, Mahmoud O, Elshazley M, Ewis A. Depressed, anxious, and stressed: What have healthcare workers on the frontlines in Egypt and Saudi Arabia experienced during the COVID-19 pandemic? *J Affect Disord*. 2021;278:365–71.
- EclinicalMedicine. Caring for People Who Care: Supporting Health Workers During the COVID 19 Pandemic. EclinicalMedicine.
- Silva LS, Machado EL, Oliveira HN De, Ribeiro AP. Condições de trabalho e falta de informações sobre o impacto da COVID-19 entre trabalhadores da saúde. *Rev Bras Saúde Ocup*. 2020;45:1–8.
- Haft JW, Atluri P, Ailawadi G, et al. Adult cardiac surgery during the COVID-19 pandemic: a tiered patient triage guidance statement. *Ann Thorac Surg*. 2020;110:697–700.
- Ministério da Saúde. Boletim EPIDEMIOLOGICO ESPECIAL: DOENÇA PELO CORONAVÍRUS COVID-19, No33. Secretaria de Vigilância Em Saúde.
- Teixeira CF de S, Soares CM, Souza EA, et al. A saúde dos profissionais de saúde no Enfrentamento da pandemia de Covid-19. *Cien Saude Colet*. 2020;25:3465–74.
- Liu Z, Wu J, Shi X, et al. Mental health status of healthcare workers in China for COVID-19 epidemic. *Ann Glob Heal*. 2020;86:1–8.
- Rolim Neto ML, Almeida HG, Esmeraldo JD, et al. When health professionals look death in the eye: the mental health of professionals who deal daily with the 2019 coronavirus outbreak. *Psychiatry Res*. 2020;288:1–3.
- Kisely S, Warren N, McMahon L, Dalais C, Henry I, Siskind D. Occurrence, prevention, and management of the psychological effects of emerging virus outbreaks on healthcare workers: rapid review and meta-analysis. *BMJ*. 2020;369:1–11.
- Ministério da Saúde, Brasil. Boletim Epidemiológico Especial: COE-COVID19. Nº17. Secretaria de Vigilância Em Saúde; 2021.
- CDC. Guidance for COVID-19. 2020. Available at: <https://www.cdc.gov/coronavirus/2019-ncov/downloads/communication/Guidance-Review.pdf>. Assessed on February, 12th, 2022.
- Van Elslande J, Houben E, Depypere M, et al. Diagnostic performance of seven rapid IgG/IgM antibody tests and the Euroimmun IgA/IgG ELISA in COVID-19 patients. *Clin Microbiol Infect*. 2020;26(8):1082–7.
- Corman VM, Landt O, Kaiser M, et al. Detection of 2019 -nCoV by RT-PCR. *Euro Surveill*. 2020;25:1–8.
- Vaz SN, Santana DS, Netto EM, et al. Saliva is a reliable, non-invasive specimen for SARS-CoV-2 detection. *Brazilian J Infect Dis*. 2020;24:422–7.
- CDC. Principles of Epidemiology in Public Health Practice, Third Edition An Introduction to Applied Epidemiology and Biostatistics. CDC Web Archive. Available at: <https://www.cdc.gov/csels/dsepd/ss1978/lesson3/section2.html>.
- Hosmer DW, Lemeshow S, Sturdivant RX. *Applied Logistic Regression*. Wiley New York; 2000.
- Karaye IM, Horney JA. The impact of social vulnerability on COVID-19 in the U.S.: an analysis of spatially varying relationships. *Am J Prev Med*. 2020;59:317–25.
- Khazanchi R, Beiter ER, Gondi S, Beckman AL, Bilinski A, Ganguli I. County-level association of social vulnerability with COVID-19 cases and deaths in the USA. *J Gen Intern Med*. 2020;35:2784–7.
- World Health Organization. Practical Considerations and Recommendations for Religious Leaders and Faith-Based Communities in the Context of COVID-19. Interim Guidance.
- Gaughan CH, Ayoubkhani D, Nafilyan V, et al. Religious affiliation and COVID-19-related mortality: a retrospective cohort study of prelockdown and postlockdown risks in England and Wales. *J Epidemiol Community Health*. 2021;75:509–14.
- Correia RF, Costa ACC, Moore DCBC, et al. Social inequalities negatively impact SARS-CoV-2 seroprevalence in different subgroups of healthcare workers in Rio De Janeiro. Available SSRN 3954097. 2021.
- Ribeiro KB, Ribeiro AF, Veras MA, de SM, de Castro MC. Social inequalities and COVID-19 mortality in the city of São Paulo, Brazil. *Int J Epidemiol*. 2021;50:732–42.
- Public Health England (PHE). Disparities in the Risk and Outcomes of COVID-19. (PHE).
- Grant MC, Geoghegan L, Arbyn M, et al. The prevalence of symptoms in 24,410 adults infected by the novel coronavirus (SARS-CoV-2; COVID-19): A systematic review and meta-

- analysis of 148 studies from 9 countries. *PLoS One*. 2020;15:1–19.
28. Larsen JR, Martin MR, Martin JD, Kuhn P, Hicks JB. Modeling the onset of symptoms of COVID-19. *Front Public Heal*. 2020;8:1–14.
29. Wei WE, Li Z, Chiew CJ, Yong SE, Toh MP, Lee VJ. Presymptomatic transmission of SARS-CoV-2 — Singapore, January 23–March 16, 2020. *MMWR Morb Mortal Wkly Rep*. 2020;69:411–5.
30. Vaira LA, Salzano G, Deiana G, De Riu G. Anosmia and Ageusia: common findings in COVID-19 patients. *Laryngoscope*. 2020: 1.
31. Bachi ALL, Santos JMB, Monteiro FR, et al. Anosmia and ageusia in COVID-19 patients : the cytokines profile in upper airways. *Rev Bras Saúde Glob*. 2020;1:6–11.