



The Brazilian Journal of INFECTIOUS DISEASES

www.elsevier.com/locate/bjid



Original article

Molecular identification and antimicrobial susceptibility of *Staphylococcus aureus* nasal isolates from medical students in Cartagena, Colombia

Alfonso Bettin, Ceyla Causil, Niradiz Reyes*

Genetics and Molecular Biology Group, Universidad de Cartagena, Cartagena, Colombia

ARTICLE INFO

Article history:

Received 7 February 2012

Accepted 13 April 2012

Keywords:

Carrier state

Staphylococcus aureus

Methicillin resistance

Panton-Valentine leukocidin

ABSTRACT

Staphylococcus aureus (SA) remains a major cause of nosocomial and community-acquired infections worldwide. Nasal carriage of this bacterium among hospital personnel constitutes an important source for nosocomial infections. A cross-sectional study enrolling the whole medical student population ($n=387$) of the School of Medicine at the Universidad de Cartagena, Colombia, was conducted to evaluate the carriage rates of both methicillin sensitive- and methicillin resistant-SA, the frequency of Panton-Valentine leukocidin genes in the isolates, and risk factors associated with carriage in this selected population. After signing an informed consent, participants completed a survey related to possible risk factors for colonization, and nasal swabs were collected from anterior nares. *Staphylococcus aureus* strains isolated from carriers were subjected to DNA extraction and PCR assays to determine the presence of *MecA* and Panton-Valentine leukocidin genes. Typing of the staphylococcal chromosomal cassette was performed for methicillin resistant strains. Molecular analysis was performed for only one strain per carrier. Prevalence of carriage for methicillin sensitive- and methicillin resistant-SA was 25% and 1.6% respectively. Most of the methicillin resistant isolates carried the staphylococcal chromosomal cassette type IV and the genes for Panton-Valentine leukocidin. To determine carrier types among medical students, each participant was subjected to four additional swabs, each taken two weeks apart. 9.8% persistent carriers, 53.1% intermittent carriers, and 37.1% non-carriers of SA were found. There was no association between risk factors analyzed and carriage of the bacterium. The study was conducted from April to September 2009 and found a persistent carriage of methicillin resistant-SA strains bearing the genes for Panton-Valentine leukocidin among medical students, evidencing the potential contribution of this portion of healthcare personnel either to the spread or introduction of these strains into the healthcare environment.

© 2012 Elsevier Editora Ltda. Este é um artigo Open Access sob a licença de [CC BY-NC-ND](http://creativecommons.org/licenses/by-nc-nd/4.0/)

* Corresponding author at: Universidad de Cartagena, Laboratorio de Investigaciones Facultad de Medicina, 1er piso, Campus de Zaragocilla, Cartagena, Bolivar, Colombia.

E-mail address: nreyes@unicartagena.edu.co (N. Reyes).

1413-8670 © 2012 Elsevier Editora Ltda. Este é um artigo Open Access sob a licença de [CC BY-NC-ND](http://creativecommons.org/licenses/by-nc-nd/4.0/)

<http://dx.doi.org/10.1016/j.bjid.2012.06.017>

Introduction

Staphylococcus aureus (SA) remains an important human pathogen responsible for health care- and community-associated infections, which also behaves as a commensal in healthy individuals, adopting the anterior nares as its ecological niche.^{1,2} A worldwide concern in public health is the emergence of methicillin-resistant SA (MRSA) strains, first considered to be confined to hospitals and medical centers and nowadays presenting in community settings. Cases of MRSA infections have been increasingly reported during the last decade in healthy individuals of the general population with no traditional risk factors for these community-associated MRSA (CA-MRSA) infections.³⁻⁵ CA-MRSA strains have been identified as highly clonal and virulent, responsible for over 30% of SA infections.⁶⁻⁸

It is well-known that nasal colonization constitutes a risk factor for subsequent severe infection, but it also can be the source of transmission of this bacterium to other susceptible individuals.^{1,9} Asymptomatic carriage of SA in healthy individuals has been shown to have a high prevalence, especially in children, young adults, and healthcare workers.¹⁰⁻¹² Thus, colonized individuals in frequent contact with the general community or healthcare environment may spread the bacteria to other community members or to susceptible patients, respectively.¹³⁻¹⁶ Medical students represent an important portion of the healthcare personnel, and they are in frequent contact with patients; thus, they are at risk of being colonized with different pathogens, including SA, and of spreading them to susceptible patients.^{17,18} Different studies around the world¹⁷⁻²¹, in Colombia,²² and Brazil²³ have evaluated nasal carriage rates of SA in medical students. Some of these studies reported that nasal carriage rates of SA increased with greater exposure of students to the hospital environment.^{17,20}

Although still a matter of debate, both epidemiological and clinical studies point out that the high virulence potential of CA-MRSA originates from Panton-Valentine leukocidin (PVL), a two-component cytotoxin that targets human and rabbit polymorphonuclear neutrophils, and monocytes or macrophages, or both.^{3,24,25} Furthermore, recent studies indicate that the clinical sequelae of infections caused by PVL-positive SA strains, regardless of methicillin resistance, tend to be more severe than infections caused by PVL-negative strains.^{24,26,27}

Although the role of PVL in CA-MRSA pathogenesis is still controversial, epidemiological and clinical data^{5,24} provide strong evidence that the high virulence potential of CA-MRSA is associated with the genes *lukS-PV* and *lukF-PV* encoding the subunits of PVL.

It has been shown that CA-MRSA isolates associated with disease carry the genes for PVL more frequently than CA-MRSA associated to asymptomatic colonization.²⁸ Thus, carriers of CA-MRSA strains positive for PVL genes may pose an increased risk of spreading disease-causing strains to susceptible individuals. Furthermore, recent studies in different parts of the world have reported the asymptomatic carriage of MRSA strains positive for PVL genes in medical students, a fact that may contribute to the spread of MRSA between the community and hospitals.²⁹ In contrast, in Colombia, there are no

data about the frequency of PVL genes in nasal isolates in medical students or other health care workers. Thus, this study aimed to investigate nasal carriage of PVL-positive SA strains, carriage categories, and risk factors associated to colonization, in medical students from the Universidad de Cartagena, Colombia during 2009.

Material and methods

Design and study population

The study was performed from April to September, 2009 by the Genetics and Molecular Biology Research Group of the Universidad de Cartagena. This was a cross-sectional study enrolling the entire student population of the School of Medicine at the Universidad de Cartagena, Colombia, comprising 387 medical students, of which 372 completed the study. Students who agreed to participate were asked to sign an informed consent and complete a written questionnaire on demographics and medical history. Variables included in the questionnaire were age, gender, previous infections, allergies and other non-infectious pathologies, smoking habits, antibiotic usage in the previous three months, and surgeries and hospitalizations in the previous six months. The study was approved by the Ethics Review Board of the Universidad de Cartagena.

To determine SA carriage types in the study population, participants were subjected to four additional consecutive nasal swabs, each taken two weeks apart. Based on microbiological results, individuals were classified in three categories: non carriers, intermittent carriers, and persistent carriers, according to the definitions proposed by Kluytmas et al.⁹ Participants that yielded a total of five negative cultures for SA were classified as non-carriers; those yielding one to three positive cultures were classified as intermittent carriers; and those yielding four or five positive cultures were classified as persistent carriers.

Specimen collection

For each participant, nasal swabs were taken from both nostrils, inoculated into Stuart's transport medium (OXOID, England), transported to the Laboratory of Microbiology of the School of Medicine at the Universidad de Cartagena, and processed within eight to 18 hours according to previously described protocols.³⁰ Briefly, specimens were plated onto mannitol-salt agar (BBL – Becton, USA) and incubated at 35 °C–37 °C for 48 hours; mannitol-salt positive colonies were subcultured onto nutrient agar (Difco – Michigan, USA) at 37 °C for 24–48 hours. Identification of SA was based on colony morphology, gram stain, catalase test, tube coagulase test (BBL, coagulase plasma rabbit – Becton, USA), and latex agglutination test (Staphaurex – Remel, UK).

Antibiotic susceptibility testing

Antibiotic susceptibility of SA strains was performed by the disc diffusion method following the recommendations of the Clinical and Laboratory Standards Institute (CLSI).³¹ The antibiotics evaluated were: rifampin, clindamycin,

erythromycin, gentamicin, trimethoprim/sulfamethoxazole, cefoxitin, and oxacillin. The D-zone test for inducible clindamycin resistance was performed for each isolate according to the CLSI method.³¹ Isolates were classified as MRSA if they demonstrated resistance to cefoxitin, and as methicillin-susceptible SA (MSSA) if they were susceptible. For methicillin-resistant strains, susceptibility to vancomycin was further evaluated by the agar dilution method³¹ at concentrations of 0.5 to 32 µg/mL, and MICs were measured manually after 24 h of incubation. The SA strains ATCC-29213 (vancomycin-sensitive), ATCC-25923 (MSSA) and ATCC-33591 (MRSA) were used as control strains. MSSA and MRSA isolates were maintained frozen at -35 °C for use in subsequent molecular assays.

Molecular analysis

Genomic DNA extraction

Genomic DNA from each isolate included in the study was obtained according to the protocol described by Millar et al.,³² with some modifications. Briefly, each SA isolate was streaked in nutrient agar and incubated for 24 h at 37 °C. Five colonies were then suspended in 1 mL of Tris 0.5 M, centrifuged at 13,000 rpm x 5 min. Supernatant was discarded and the pellet resuspended in 500 µL buffer TE (10 mM Tris; 1 mM EDTA, pH:8.0) and boiled at 100 °C for 30 min, and then incubated at -35 °C for 20 minutes, thawed at 65 °C, and finally centrifuged at 13,000 rpm for 15 min. Supernatant containing bacterial DNA was collected in a clean tube and stored at -20 °C for subsequent PCR assays.

Detection of *Nuc*, *MecA* and *PVL* genes

SA isolates identified by microbiological methods were subjected to multiplex polymerase chain reaction assays to assess the presence of *lukF-PV* (encoding part of the PVL toxin), *mecA* (methicillin resistance determinant), and *nuc* genes using a set of three primer pairs: *MecA1F* – *MecA2R* that amplifies a 147 bp fragment of *mecA* gene;³³ *Nuc1F* – *Nuc2R* that amplifies a 300 bp fragment of *nuc* gene specific for SA,³⁴ and *LukPV1F* – *LukPV2R* that amplifies a 437 bp fragment of *PVL* gene.²⁵ SA strains ATCC 33591 (*mecA* +; *nuc* +; *PVL* –) and ATCC 25923 (*mecA* –; *nuc* +; *PVL* +) were used as controls for *mecA* and *PVL* amplification and pure water was used as control for the PCR assay.

Typing of *SCCmec* element

All confirmed MRSA isolates were subjected to *SCCmec* typing using a multiplex PCR assay in accordance with the protocol described by Zhang et al.³³ using the SA control strains NCTC10442 (*SCCmec* type I), N315 (*SCCmec* type II), and JCSC4744 (*SCCmec* type IV).

For each PCR assay, DNA from each isolate was amplified in a reaction volume of 25 µL containing 12.5 µL of the PCR mix (PCR master mix; Promega®), 0.2 µM of each primer, and 5 µL of DNA template. The reaction was performed in a Perkin-Elmer thermal cycler under the following conditions: an initial denaturation step at 94 °C for 5 min, followed by 30 cycles of 94 °C for 1 min, 50 °C for 1 min, and 72 °C for 2 min, with a final extension at 72 °C for 10 min. PCR products were visualized

in a 2% agarose gel stained with ethidium bromide under UV transillumination.

Statistical analysis

Statistical analysis was performed with the Statistical Package for Social Sciences (SPSS) version 18.0 for Windows (SPSS Inc. – Chicago, IL). To determine the prevalence of SA nasal carriage, the study population was classified as carrier and non-carrier based on microbiology results obtained from the first nasal swab survey. Conversely, carrier types (non-carrier, persistent carrier, and intermittent carrier) were determined at the end of the study based on the definitions by Kluytmas et al.⁹ Univariate analysis was applied to determine the association of colonization or carrier types to potential risk factors using the chi-square test, with a p-value ≤ 0.05 for statistical significance.

Results

A total of 372 participants from the entire medical student population, comprised by a total of 387 students during the study period, were surveyed. The age of the participants ranged between 15 and 26 years (average 19 years, SD: ±2.21). At the first nasal swab survey, SA was isolated from 101 (27.15%) of the 372 participants; six (1.61%) participants were MRSA carriers, and 95 were MSSA carriers (25.5%). There was no statistical association with age ($p=0.752$) or gender ($p=0.275$). Furthermore, risk factors including contact with patients, previous hospitalizations, antibiotic usage, nasal abnormalities, allergic diseases (asthma, sinusitis, and rhinitis), smoking habits, and years of study at the university, were not associated to nasal carrier state of SA.

The 101 SA strains obtained at the first nasal swab survey were subjected to antibiotic susceptibility testing and molecular analysis. Six isolates were resistant to oxacillin (5.9%); three were resistant to clindamycin (2.97%), and 15 were resistant to erythromycin (14.85%), one of which had the inducible clindamycin resistance phenotype (D-zone test positive). No strain showed resistance to gentamicin, trimethoprim-sulfamethoxazole, or rifampin. None of the six MRSA strains were resistant to vancomycin (MIC < 0.5 µg/mL); one MRSA strain was erythromycin-resistant.

PVL genes were found in only four of the 95 MSSA strains, and in five of the six MRSA strains (Fig. 1). *SCCmec* typing of the MRSA strains showed that five carried the *SCCmec* type IV. The remaining MRSA strain was *SCCmec* type I (Fig. 2). The five MRSA strains bearing *SCCmec* type IV were also *PVL*-positive, while the strain bearing *SCCmec* type I was *PVL* negative. Thus, *PVL* genes were more frequently carried by MRSA strains than by MSSA strains (5/6 vs. 4/95, $p \leq 0.0001$).

In addition, to determine SA carrier types in the study population, the 372 participants were subjected to four additional consecutive nasal swabs, each taken three weeks apart. From the 372 students subjected to five nasal swabs, 9.7% ($n=36$) were persistent carriers, 53.2% ($n=198$) were intermittent carriers, and 37.1% ($n=138$) were non-carriers. Three persistent carriers were colonized with MRSA strains that carried the

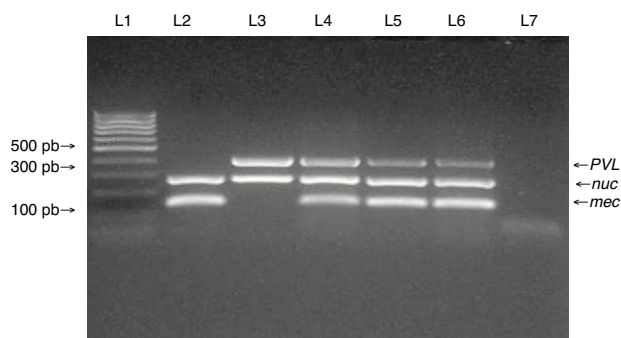


Fig. 1 – Multiplex PCR for detection of nuc, mecA, and PVL genes. Multiplex PCR was performed to detect the presence of nuc, mecA and PVL genes in isolates from medical students to confirm *Staphylococcus aureus* species (nuc gene), methicillin resistance (mecA gene) and presence of PVL genes. Lane 1: MW (DNA molecular weight markers). Lane 2: ATCC 33591 reference strain (nuc+, mecA+, PVL-). Lane 3: ATCC 25923 reference strain (nuc+, mecA-, PVL+). Lanes 4 to 6: MRSA isolates from the study. Lane 7: negative control for the PCR reactions.

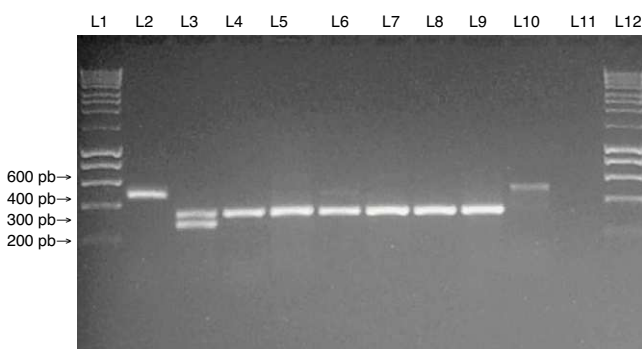


Fig. 2 – Multiplex PCR assay for SCCmec typing of SA isolates. Multiplex PCR was performed for typing of the SCCmec element in MRSA isolates from the study. Lanes 1 and 12: MW (DNA molecular weight markers). Lane 2: NCTC10442 reference strain (SCCmec type I). Lane 3: N315 reference strain (SCCmec type II). Lane 4: JCSC4744 reference strain (SCCmec type IV). Lanes 5 to 9: MRSA isolates from medical students carrying SCCmec type IV. Lane 10: MRSA isolate from a medical student carrying SCCmec type I. Lane 11: negative control for the PCR assay.

genes for PVL and SCCmec type IV, and they represented medical students enrolled in semesters with clinical rotations.

Discussion

In Colombia there are few reports about the prevalence of SA carriage in medical students,²² and reports on CA-MRSA colonization in individuals without risk factors associated to healthcare are scarce.^{30,35} Traditionally, colonization by MRSA has been evaluated and described in healthcare personnel, or individuals that have contact with these institutions or their workers (physicians, nurses, hospital workers, etc.). This study

found that 1.61% of medical students from the Universidad de Cartagena carried in their nares, persistently or intermittently, MRSA strains with the community-associated profile (PVL-positive and SCCmec type IV), providing evidence that these strain types are circulating in the healthcare personnel in Cartagena. Previous studies in Colombia have shown MRSA colonization rates in the pharynx, nares, and on the hands similar to those reported here. For example, Ganoa et al.²² reported that 1.3% of medical students in clinical rotations carried MRSA strains in their nares, and Baez et al.³⁵ recently reported that 0.6% of individuals from the general population with no apparent exposure to healthcare environment and no antibiotic usage in the previous six months carried CA-MRSA strains on their hands. Although the rates for MRSA carriage in healthcare personnel are relatively low, they are significant, since they provide evidence of colonization at different anatomical sites by CA-MRSA both in individuals from the general population and in medical students who are in close contact with patients during their clinical rotations in different hospital centers. This constitutes an important risk factor for spreading of the pathogen to patients and to the general population.

The present results are similar to those shown in international studies. For example, studies from United States have reported up to 1.53% of intermediate resistance to methicillin in SA isolates from medical students in first and third year.³⁶ In Chile, Cifuentes et al.³⁷ found that around 5.2% of medical students participating in their study were nasal carriers of MRSA. Baliga et al.,³⁸ in Turkey, reported that 4.4% of medical students in clinical practice were MRSA carriers. In Brazil, Prates et al.²³ reported that the prevalence of CA-MRSA nasal carriage in university students was 2.4%.

In Colombia, several studies have shown PVL-positive SA strains, both MSSA and MRSA, as important source of infections of varying severity,³⁹⁻⁴¹ evidencing an increasingly serious public health problem in this country. The present data show that MRSA isolates from medical students share features of CA-MRSA (Figs. 1 and 2), warning about the potential risk for introduction of these strains to the healthcare environment.

Published evidence^{42,43} points out that health-care workers more likely act as vectors and not as the main sources of MRSA transmission; thus emphasizing that good hand hygiene practices remain essential to control the spread of MRSA. In addition, eradication of MRSA colonization from patients and healthy carriers has been tried with topical and oral antibiotics. For example, international guidelines recommend the use of mupirocin for nasal decolonization in certain groups of patients and health-care workers colonized with MRSA.⁴⁴ However, this antibiotic is only effective at removing the bacterium from the nose over a few weeks, and nasal relapses are common within several months.⁴⁵ Moreover, clinical studies have found little or no efficacy of mupirocin treatment in preventing nosocomial SA infections.⁴⁶⁻⁴⁸ Another shortcoming for this antibiotic is the increasing trend in resistance and the subsequent reduction in effectiveness.^{49,50}

Since there are no recommended guidelines for routine decolonization of CA-MRSA in healthcare workers, especially medical students, and the authors were concerned about the reported rise in bacterial resistance to mupirocin, the most used antibiotic for nasal decolonization, it was decided not to

recommend any sort of medical therapy to the group of CA-MRSA carriers in the student population. Instead, the three persistent CA-MRSA carriers identified in this study were notified about their colonization status and invited to participate in an educational session with emphasis on hand hygiene and standard precautions for proper handling of patients, aimed to decrease spread of the bacterium and to reduce the risk of infection in susceptible patients.^{42,51}

Conclusions

CA-MRSA carriage was found in this medical student population, and PVL genes were significantly carried by these MRSA strains compared to MSSA strains ($p \leq 0.0001$). The different carrier types of SA colonization in medical students from this university were also identified. The high frequency of SA carriage (persistent and intermittent) found in this study may represent a risk for the spreading of SA strains, including MRSA strains, from the healthcare personnel to susceptible patients and to other individuals in the community.⁵² The present study demonstrates that medical students from this geographical area asymptotically carry MRSA strains persistently, mainly PVL-positive, with the threat of spreading them both to community and hospital environments.

Studies addressed to determine the duration of CA-MRSA carriage, transmissibility, attack rates, and eradication strategies are required to clarify the role of health-care workers, including medical students, as reservoirs and vectors of these strains in health-care facilities.⁵¹ In addition, the reported increase in bacterial resistance to mupirocin, with its subsequent reduction in effectiveness, emphasizes the need for further studies aimed to develop strategies to successfully disrupt transmission of CA-MRSA strains to susceptible hosts.

Conflict of interest

All authors declare to have no conflict of interest.

Acknowledgements

This study was supported by the Universidad de Cartagena to Niradiz Reyes, PhD, Principal Investigator. The authors are thankful to the medical students that participated in the study; to Javier Escobar from the Laboratory of Bacterial Molecular Genetics at Universidad El Bosque, for technical assistance in the multiplex PCR assays; and to Juan Rebollo, for assistance in laboratory protocols.

REFERENCES

- Kluytmans JA, Wertheim HF. Nasal carriage of *Staphylococcus aureus* and prevention of nosocomial infections. *Infection*. 2005;33:3-8.
- Peacock SJ, de Silva I, Lowy FD. What determines nasal carriage of *Staphylococcus aureus*? *Trends Microbiol*. 2001;9:605-10.
- Vandenesch F, Naimi T, Enright MC, Lina G, Nimmo GR, Heffernan H, et al. Community-acquired methicillin-resistant *Staphylococcus aureus* carrying Panton-Valentine leukocidin genes: worldwide emergence. *Emerg Infect Dis*. 2003;9:978-84.
- Millar BC, Loughrey A, Elborn JS, Moore JE. Proposed definitions of community-associated methicillin-resistant *Staphylococcus aureus* (CA-MRSA). *J Hosp Infect*. 2007;67:109-13.
- Naimi TS, LeDell KH, Como-Sabetti K, Borchardt SM, Boxrud DJ, Etienne J, et al. Comparison of community- and health care-associated methicillin-resistant *Staphylococcus aureus* infection. *JAMA*. 2003;290:2976-84.
- Kaplan SL. Implications of methicillin-resistant *Staphylococcus aureus* as a community-acquired pathogen in pediatric patients. *Infect Dis Clin North Am*. 2005;19:747-57.
- Kaplan SL, Hulten KG, Gonzalez BE, Hammerman WA, Lamberth L, Versalovic J, et al. Three-year surveillance of community-acquired *Staphylococcus aureus* infections in children. *Clin Infect Dis*. 2005;40:1785-91.
- Mishaan AM, Mason Jr EO, Martinez-Aguilar G, Hammerman W, Propst JJ, Lupski JR, et al. Emergence of a predominant clone of community-acquired *Staphylococcus aureus* among children in Houston, Texas. *Pediatr Infect Dis J*. 2005;24:201-6.
- Kluytmans J, van Belkum A, Verbrugh H. Nasal carriage of *Staphylococcus aureus*: epidemiology, underlying mechanisms, and associated risks. *Clin Microbiol Rev*. 1997;10:505-20.
- Lin YC, Lauderdale TL, Lin HM, Chen PC, Cheng MF, Hsieh KS, et al. An outbreak of methicillin-resistant *Staphylococcus aureus* infection in patients of a pediatric intensive care unit and high carriage rate among health care workers. *J Microbiol Immunol Infect*. 2007;40:325-34.
- Uhlemann AC, Knox J, Miller M, Hafer C, Vasquez G, Ryan M, et al. The environment as an unrecognized reservoir for community-associated methicillin resistant *Staphylococcus aureus* USA300: a case-control study. *PLoS One*. 2011;6:e22407.
- Busato C, Carneiro Leão M, Gabardo J. *Staphylococcus aureus* nasopharyngeal carriage rates and antimicrobial susceptibility patterns among health care workers and their household contacts. *Braz J Infect Dis*. 1998;2:78-84.
- Carre N, Herbreteau N, Askeur N, Dabas JP, Sillam F, Pinchon C, et al. Outbreak of skin infections due to *Staphylococcus aureus* carrying Panton-Valentine leukocidin genes in pupils and their relatives. *Med Mal Infect*. 2011;41:364-71.
- Fascia P, Martin I, Mallaval FO, Grattard F, Pozzetto B, Lucht F, et al. Possible implication of student nurses in the transmission of methicillin-resistant *Staphylococcus aureus* during a nosocomial outbreak. *Pathol Biol (Paris)*. 2003;51:479-82.
- Gilomen S, Ruef C, Held L, Cathomas A, French LE, Hafner J. Successful control of methicillin-resistant *Staphylococcus aureus* outbreak at a university department of dermatology. *J Eur Acad Dermatol Venereol*. 2011;25:441-6.
- Kalka-Moll WM, Lee JC, Fabri M, Seifert H. Intrafamilial outbreak of subcutaneous abscesses caused by PVL-positive methicillin-sensitive *Staphylococcus aureus*. *J Infect*. 2008;57:278-80.
- Guclu E, Yavuz T, Tokmak A, Behcet M, Karali E, Ozturk O, et al. Nasal carriage of pathogenic bacteria in medical students: effects of clinic exposure on prevalence and antibiotic susceptibility. *Eur Arch Otorhinolaryngol*. 2007;264:85-8.
- Adesida SA, Abioye OA, Bamiro BS, Brai BI, Smith SI, Amisu KO, et al. Associated risk factors and pulsed field gel electrophoresis of nasal isolates of *Staphylococcus aureus* from medical students in a tertiary hospital in Lagos, Nigeria. *Braz J Infect Dis*. 2007;11:63-9.
- Rohde RE, Denham R, Brannon A. Methicillin resistant *Staphylococcus aureus*: carriage rates and characterization of students in a Texas university. *Clin Lab Sci*. 2009;22:176-84.
- Stubbs E, Pegler M, Vickery A, Harbour C. Nasal carriage of *Staphylococcus aureus* in Australian (pre-clinical and clinical) medical students. *J Hosp Infect*. 1994;27:127-34.

21. Kingdom JC, Joyce SM, Bradley FL, Jauch W, Falkiner FR, Keane CT. *Staphylococcal* nasal carriage in medical students with varying clinical exposure. *J Hosp Infect.* 1983;4:75-9.
22. Cifuentes MG, Chaparro DR, Serrato MP, Peña AP, Pinilla MI, Gutiérrez GR. Variación del estado de portador de *Staphylococcus aureus* en una población de estudiantes de medicina. *Rev Cienc Salud.* 2009;7:37-46.
23. Prates K, Torres AM, Botelho L, Yamada S, Cardoso C, Bronharo M. Nasal carriage of methicillin-resistant *Staphylococcus aureus* in university students. *Braz J Infect Dis.* 2010;14:316-8.
24. Gillet Y, Issartel B, Vanhems P, Fournet JC, Lina G, Bes M, et al. Association between *Staphylococcus aureus* strains carrying gene for Pantone-Valentine leukocidin and highly lethal necrotising pneumonia in young immunocompetent patients. *Lancet.* 2002;359:753-9.
25. Lina G, Piemont Y, Godail-Gamot F, Bes M, Peter MO, Gauduchon V, et al. Involvement of Pantone-Valentine leukocidin-producing *Staphylococcus aureus* in primary skin infections and pneumonia. *Clin Infect Dis.* 1999;29:1128-32.
26. Bocchini CE, Hulten KG, Mason Jr EO, Gonzalez BE, Hammerman WA, Kaplan SL. Pantone-Valentine leukocidin genes are associated with enhanced inflammatory response and local disease in acute hematogenous *Staphylococcus aureus* osteomyelitis in children. *Pediatrics.* 2006;117:433-40.
27. Lo WT, Tang CS, Chen SJ, Huang CF, Tseng MH, Wang CC. Pantone-Valentine leukocidin is associated with exacerbated skin manifestations and inflammatory response in children with community-associated staphylococcal scarlet fever. *Clin Infect Dis.* 2009;49:e69-75.
28. Boyle-Vavra S, Ereshefsky B, Wang CC, Daum RS. Successful multiresistant community-associated methicillin-resistant *Staphylococcus aureus* lineage from Taipei, Taiwan, that carries either the novel *Staphylococcal* chromosome cassette *mec* (SCCmec) type VT or SCCmec type IV. *J Clin Microbiol.* 2005;43:4719-30.
29. Ma XX, Sun DD, Wang S, et al. Nasal carriage of methicillin-resistant *Staphylococcus aureus* among preclinical medical students: epidemiologic and molecular characteristics of methicillin-resistant *S. aureus* clones. *Diagn Microbiol Infect Dis.* 2011;70:22-30.
30. Bettin A, Suarez P, Bedoya A, Reyes N. *Staphylococcus aureus* in residents from a nursing-home in Cartagena. *Rev Salud Publica (Bogota).* 2008;10:650-7.
31. CLSI. Performance standards for antimicrobial susceptibility testing: twentieth informational supplement. M100-S20. 2010;30.
32. Millar BC, Jiru X, Moore JE, Earle JA. A simple and sensitive method to extract bacterial, yeast and fungal DNA from blood culture material. *J Microbiol Methods.* 2000;42:139-47.
33. Zhang K, McClure JA, Elsayed S, Louie T, Conly JM. Novel multiplex PCR assay for characterization and concomitant subtyping of staphylococcal cassette chromosome *mec* types I to V in methicillin-resistant *Staphylococcus aureus*. *J Clin Microbiol.* 2005;43:5026-33.
34. Brakstad OG, Aasbakk K, Maeland JA. Detection of *Staphylococcus aureus* by polymerase chain reaction amplification of the *nuc* gene. *J Clin Microbiol.* 1992;30:1654-60.
35. Benavides PB, Tamayo MZ, Pérez AR, Giraldo AR, Quiceno YJ. Colonización por *Staphylococcus aureus* resistente a metilicina en las manos de individuos de la comunidad. *Iatreia.* 2010;23:5-10.
36. Bischoff WE, Wallis ML, Tucker KB, Reboussin BA, Sherertz RJ. *Staphylococcus aureus* nasal carriage in a student community: prevalence, clonal relationships, and risk factors. *Infect Control Hosp Epidemiol.* 2004;25:485-91.
37. Cifuentes M, Jiménez VP, Ojeda SA. Prevalencia de portación de *Staphylococcus aureus* y *S. aureus* metilicina resistente en estudiantes de medicina y población general/Prevalence of *Staphylococcus aureus* and methicillin resistant *S. aureus* carriage in medical students and in general population. *Rev Chil Infectol.* 1998;3:161-9.
38. Baliga S, Bansil R, Suchitra U, Bharati B, Vidyakshmi K, Shenoy S. Nasal carriage of methicillin-resistant *Staphylococcus aureus* in medical students. *J Hosp Infect.* 2008;68:91-2.
39. Jiménez JN, Ocampo AM, Vanegas JM, Rodríguez EA, Garcés CG, Patiño LA, et al. Characterisation of virulence genes in methicillin susceptible and resistant *Staphylococcus aureus* isolates from a paediatric population in a university hospital of Medellín, Colombia. *Mem Inst Oswaldo Cruz.* 2011;106:980-5.
40. Arias CA, Rincon S, Chowdhury S, Martinez E, Coronell W, Reyes J, et al. MRSA USA300 clone and VREF—a U.S.-Colombian connection? *N Engl J Med.* 2008;359:2177-9.
41. Alvarez-Olmos MI, Enriquez SP, Perez-Roth E, Mendez-Alvarez S, Escobar J, Vanegas N, et al. Pediatric cases from Colombia caused by a Pantone-Valentine Leukocidin-positive community-acquired methicillin-resistant *Staphylococcus aureus* ST8-SCCmecIVc clone. *Pediatr Infect Dis J.* 2009;28:935.
42. Sax H, Allegranzi B, Uckay I, Larson E, Boyce J, Pittet D. 'My five moments for hand hygiene': a user-centred design approach to understand, train, monitor and report hand hygiene. *J Hosp Infect.* 2007;67:9-21.
43. WHO. WHO guidelines on hand hygiene in health care (advanced draft): a summary. Clean hands are safer hands. 2005 [updated 2005; cited 2012 April 09]; Available from: <http://www.who.int/patientsafety/events/05/HH.en.pdf>.
44. Coia J, Duckworth G, Edwards D, Farrington M, Fry C, Humphreys H, et al. Guidelines for the control and prevention of methicillin-resistant *Staphylococcus aureus* (MRSA) in healthcare facilities. *J Hosp Infect.* 2006;63 Suppl 1:S1-44.
45. Doebbeling B, Reagan D, Pfaller M, Houston AK, Hollis RJ, Wenzel RP. Long-term efficacy of intranasal mupirocin ointment. A prospective cohort study of *Staphylococcus aureus* carriage. *Arch Intern Med.* 1994;154:1505-8.
46. Kalmeijer MD, Coertjens H, van Nieuwland-Bollen PM, Bogaers-Hofman GA, De Baere A, Stuurman A, et al. Surgical site infections in orthopedic surgery: the effect of mupirocin nasal ointment in a double-blind, randomized, placebo-controlled study. *Clin Infect Dis.* 2002;35:353-8.
47. Perl TM, Cullen JJ, Wenzel RP, Zimmerman MB, Pfaller MA, Sheppard D, et al. Intranasal mupirocin to prevent postoperative *Staphylococcus aureus* infections. *N Engl J Med.* 2002;346:1871-7.
48. Wertheim HF, Vos MC, Ott A, Voss A, Kluytmans JA, Vandembroucke-Grauls CM, et al. Mupirocin prophylaxis against nosocomial *Staphylococcus aureus* infections in nonsurgical patients: a randomized study. *Ann Intern Med.* 2004;140:419-25.
49. Fujimura S, Watanabe A. Survey of high- and low-level mupirocin-resistant strains of methicillin-resistant *Staphylococcus aureus* in 15 Japanese hospitals. *Chemotherapy.* 2003;49:36-8.
50. Simor A, Stuart T, Louie L, Watt C, Ofner-Agostini M, Gravel D. Mupirocin-resistant, methicillin-resistant *Staphylococcus aureus* strains in Canadian hospitals. *Antimicrob Agents Chemother.* 2007;51:3880-6.
51. Albrich WC, Harbarth S. Health-care workers: source, vector, or victim of MRSA? *Lancet Infect Dis.* 2008;8:289-301.
52. Cespedes C, Miller M, Quagliarello B. Differences between *Staphylococcus aureus* isolates from medical and nonmedical hospital personnel. *J Clin Microbiol.* 2002;40:2594-7.